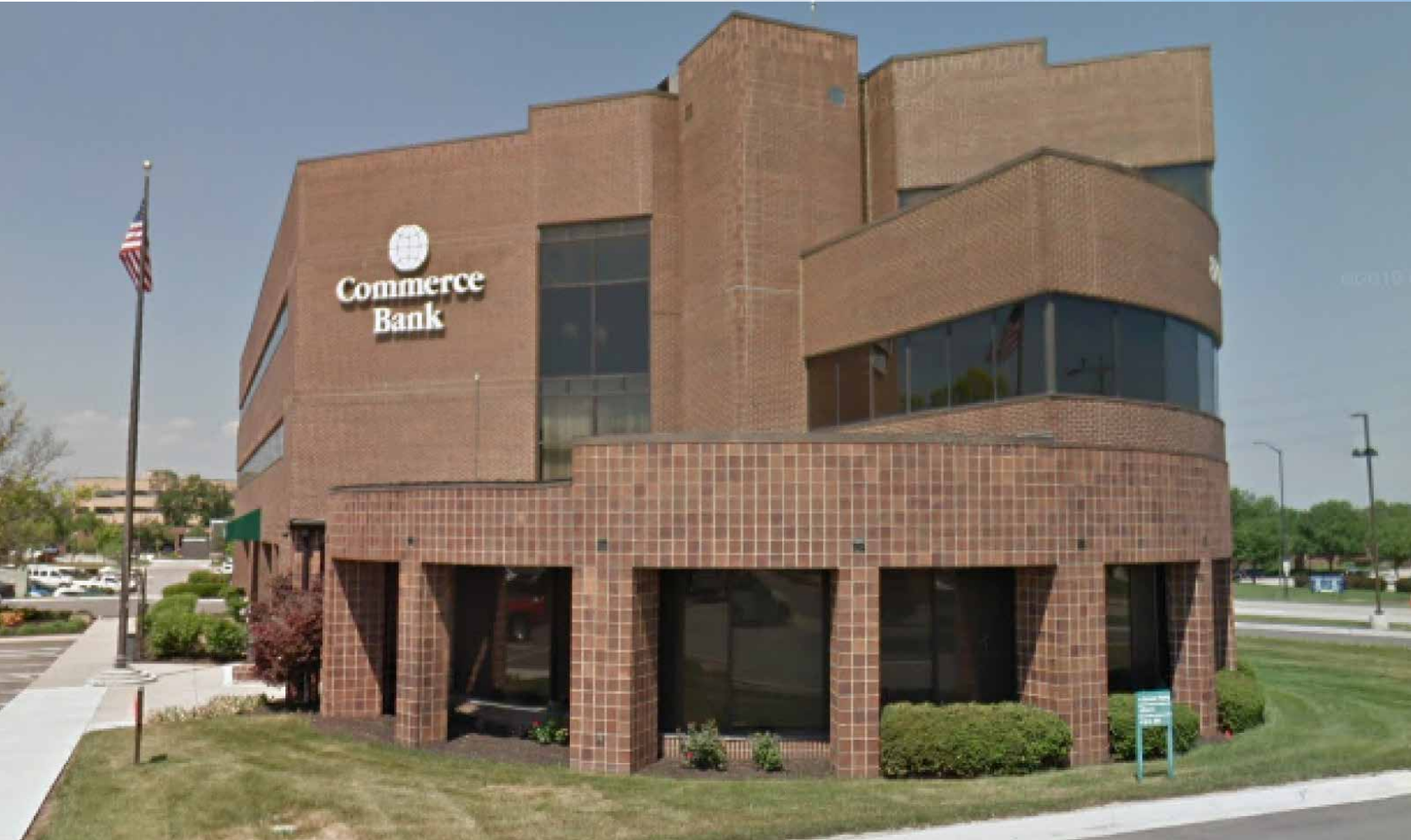




SUITES & OFFICE SERVICES OF LENEXA

8700 Monrovia Street, Lenexa, Kansas



SUITES RANGING IN SQUARE FOOTAGE AND PRICE

DEMOGRAPHICS

	1 mile	3 miles	5 miles
Estimated Population	8,478	101,817	218,030
Avg. Household Income	\$79,499	\$90,593	\$96,942

- 44 executive offices starting at 100 square feet
- Single-office and multiple-office suites available
- Accommodates one to two people per suite
- Monthly, all-inclusive leases starting as low as \$500
- Located in the landmark Commerce Bank building on 87th St. across the street from Lenexa City Hall
- In the heart of Johnson County with quick access to I-35, I-69, and I-435

 [CLICK HERE TO VIEW MORE LISTING INFORMATION](#)

For More Information Contact:

DANIEL BROCATO | 816.412.7303 | dbrocato@blockandco.com

Exclusive Agent





SUITES & OFFICE SERVICES OF LENEXA

8700 Monrovia Street, Lenexa, Kansas

AMENITIES

Suites & Office Services of Lenexa

Who We Are

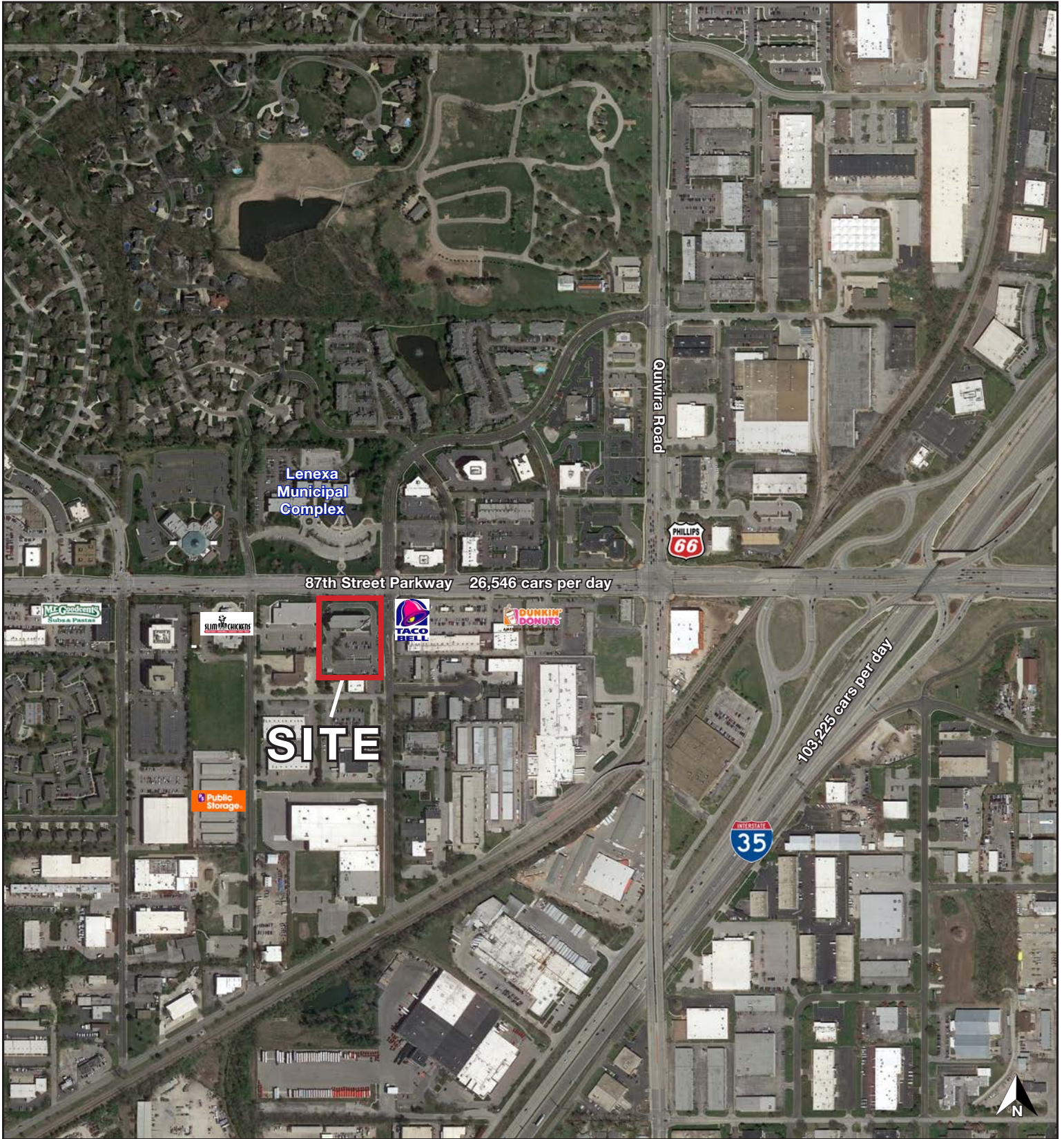
Suites & Office Services is a full service office business center with individual, private offices, reception area & meeting rooms. Our concept is easy: by sharing resources, Suites & Office Services offers small business executives an opportunity to get out of working from their home office or moving from current office space that doesn't provide much needed business support services and a professional atmosphere with flexible lease terms.

Everything is ready for you. Your business can be operational instantly with full administrative support. All you need to bring is your computer! Furnished and unfurnished offices available. Compare this option with renting typical office space or a store front location. It may take weeks just to get the internet and or phone lines installed and functioning, and you'll also be responsible for utility costs and cleaning your own office.

Our Value Proposition

- Private office space
- On-Site receptionist to answer calls and greet clients
- Access to 3 Conference Rooms which allow for social distancing
- Super high-speed internet service
- Cloud based VOIP phone system
- Printing, scanning and other business services
- USPS/UPS mail services
- Notary services
- 24 hour access
- Convenient, easily identifiable & safe location (Commerce Bank building).
- Flexible lease terms that include all utilities and nightly janitorial services
- Ample free parking

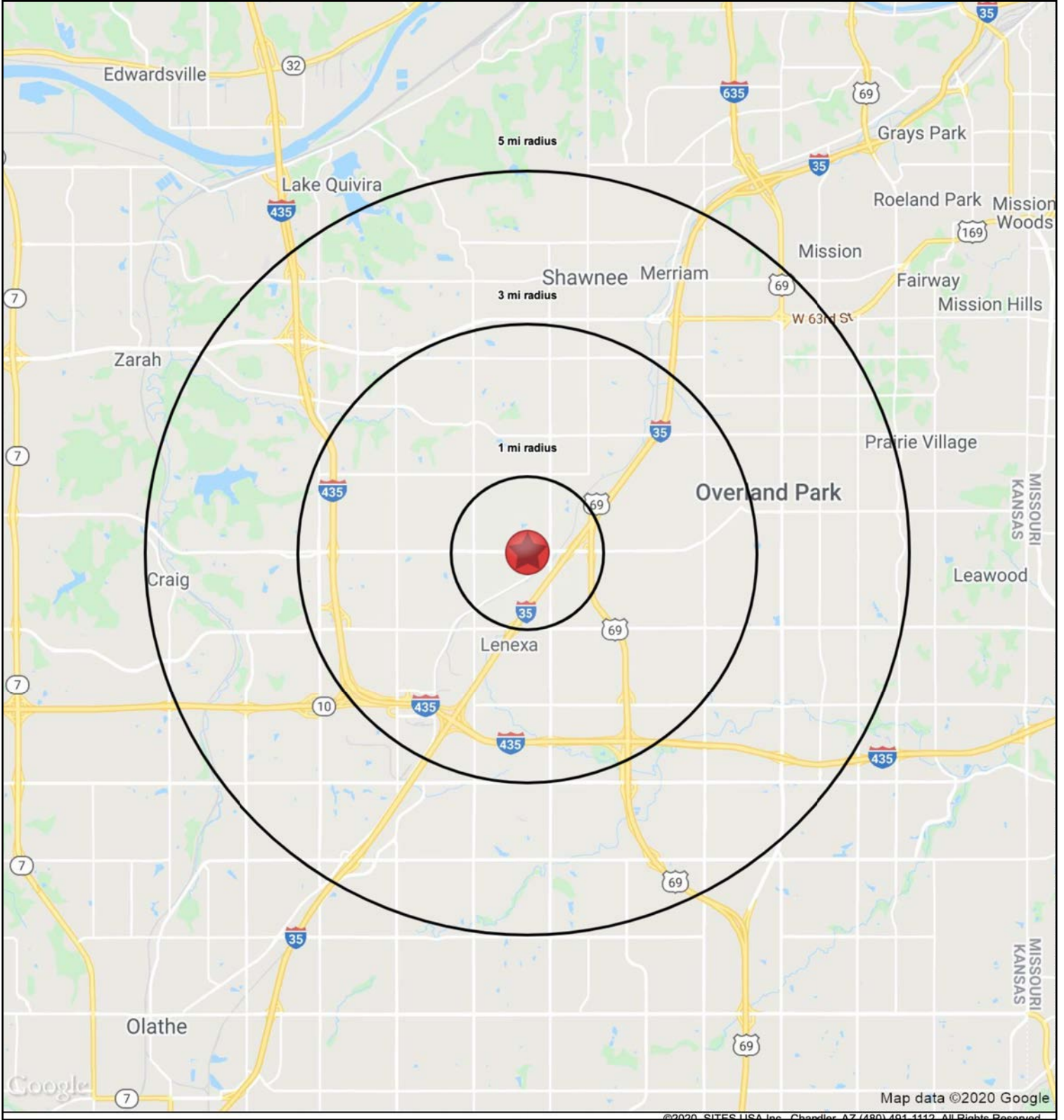
AERIAL





SUITES & OFFICE SERVICES OF LENEXA

8700 Monrovia Street, Lenexa, Kansas





SUITES & OFFICE SERVICES OF LENEXA

8700 Monrovia Street, Lenexa, Kansas

HS1

8700 Monrovia Street		1 mi radius	3 mi radius	5 mi radius
Lenexa, KS 66215				
POPULATION	2020 Estimated Population	8,478	101,817	218,030
	2025 Projected Population	8,797	105,813	226,486
	2010 Census Population	7,745	99,172	207,499
	2000 Census Population	7,949	98,608	202,056
	Projected Annual Growth 2020 to 2025	0.8%	0.8%	0.8%
	Historical Annual Growth 2000 to 2020	0.3%	0.2%	0.4%
	2020 Median Age	37.1	39.2	40.1
HOUSEHOLDS	2020 Estimated Households	4,171	45,175	98,210
	2025 Projected Households	4,427	48,068	104,395
	2010 Census Households	3,635	42,401	89,951
	2000 Census Households	3,588	40,842	84,033
	Projected Annual Growth 2020 to 2025	1.2%	1.3%	1.3%
	Historical Annual Growth 2000 to 2020	0.8%	0.5%	0.8%
RACE AND ETHNICITY	2020 Estimated White	77.6%	79.3%	81.5%
	2020 Estimated Black or African American	9.6%	7.6%	6.4%
	2020 Estimated Asian or Pacific Islander	4.6%	4.8%	5.1%
	2020 Estimated American Indian or Native Alaskan	0.5%	0.4%	0.4%
	2020 Estimated Other Races	7.7%	7.8%	6.6%
	2020 Estimated Hispanic	10.8%	11.5%	9.5%
INCOME	2020 Estimated Average Household Income	\$79,499	\$90,593	\$96,942
	2020 Estimated Median Household Income	\$69,453	\$77,357	\$81,932
	2020 Estimated Per Capita Income	\$39,191	\$40,270	\$43,732
EDUCATION (AGE 25+)	2020 Estimated Elementary (Grade Level 0 to 8)	1.3%	2.3%	1.9%
	2020 Estimated Some High School (Grade Level 9 to 11)	2.6%	2.9%	2.5%
	2020 Estimated High School Graduate	20.3%	17.9%	16.6%
	2020 Estimated Some College	21.9%	20.6%	19.4%
	2020 Estimated Associates Degree Only	8.9%	8.7%	8.5%
	2020 Estimated Bachelors Degree Only	30.4%	31.3%	32.5%
	2020 Estimated Graduate Degree	14.5%	16.4%	18.6%
BUSINESS	2020 Estimated Total Businesses	1,189	5,475	13,412
	2020 Estimated Total Employees	14,944	70,316	186,829
	2020 Estimated Employee Population per Business	12.6	12.8	13.9
	2020 Estimated Residential Population per Business	7.1	18.6	16.3

